

2 795 000 €

Contact agency

Styles

10 place vendôme

75001 Paris

+33 (0) 952 346 611 /

stylesimmobilier@gmail.com

For sale house

7 rooms

Surface : 260 m²

Surface of the land : 1400 m²

Exposition : Plein sud

Features :

POOL, AIR CONDITIONING, fireplace,

Automatic Watering, Laundry room,

Automatic gate

4 bedroom

2 terraces

1 bathroom

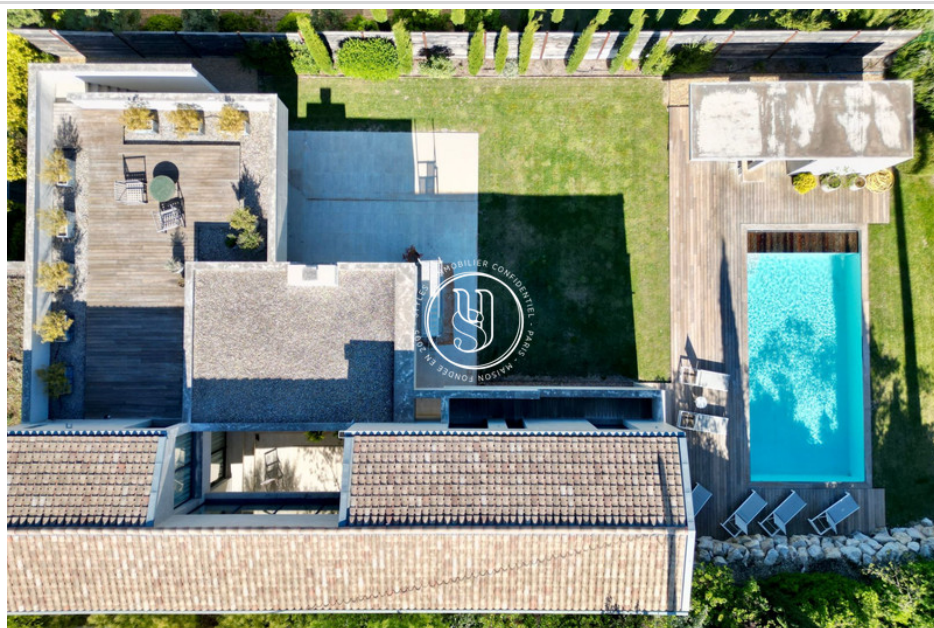
3 showers

4 WC

1 garage

1 parking

Document non contractuel



House 3741 Saint-Rémy-de-Provence

Superb contemporary design with masterly lines, located within walking distance of the center of Saint Rémy, in a quiet, private estate. Built on a landscaped plot of over 1,400m2, the property features spacious interiors that let in plenty of light throughout the day. Large bay windows create a highly successful indoor/outdoor effect, which is further enhanced by outdoor spaces that are treated "like interiors", so you can enjoy the mild Provencal weather all year round. A beautiful entrance hall provides access to amenities and a vast dressing room, followed by the living areas: living room with fireplace and high ceilings, terraces and a view of the garden. Then there's access to the open-plan but intimate kitchen (which can be separated from the living room if required), its terrace overlooking the garden and pool area beyond. The living room also opens onto an open patio, a true extension of the interior and protected by the perspectives created by the architect: perfect for summer siestas and cooler afternoons. A master suite completes the first floor. The first floor features a vast suite with a superb terrace overlooking the Alpilles, a beautiful glassed-in passageway and two other bedrooms - sharing a shower room and toilet - all opening onto a terrace/courtyard or balcony. A pool area, pool house and summer kitchen complete the ensemble, as do a garage and laundry room. Top-of-the-range features: underfloor heating and cooling on the first floor, ducted Daikin air conditioning on the upper floor. Miele equipment in the kitchen

